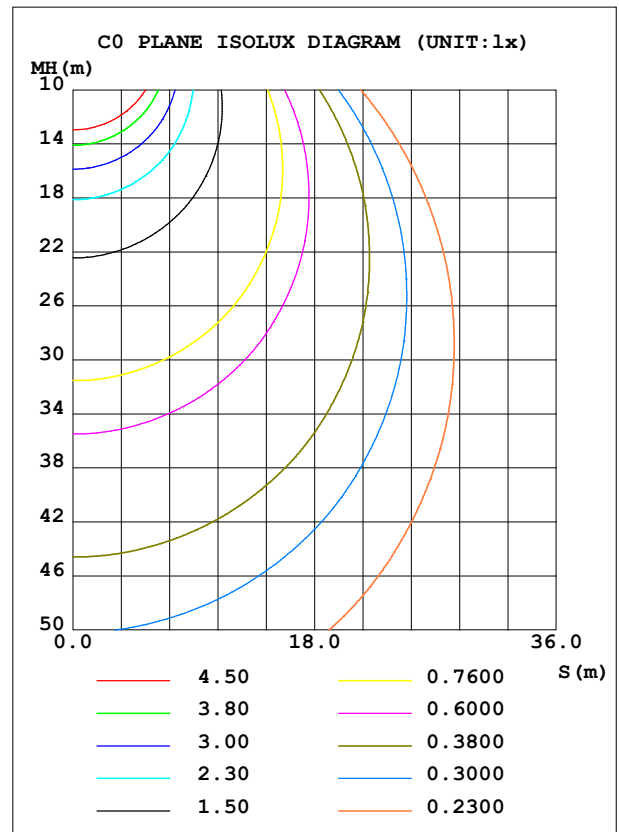
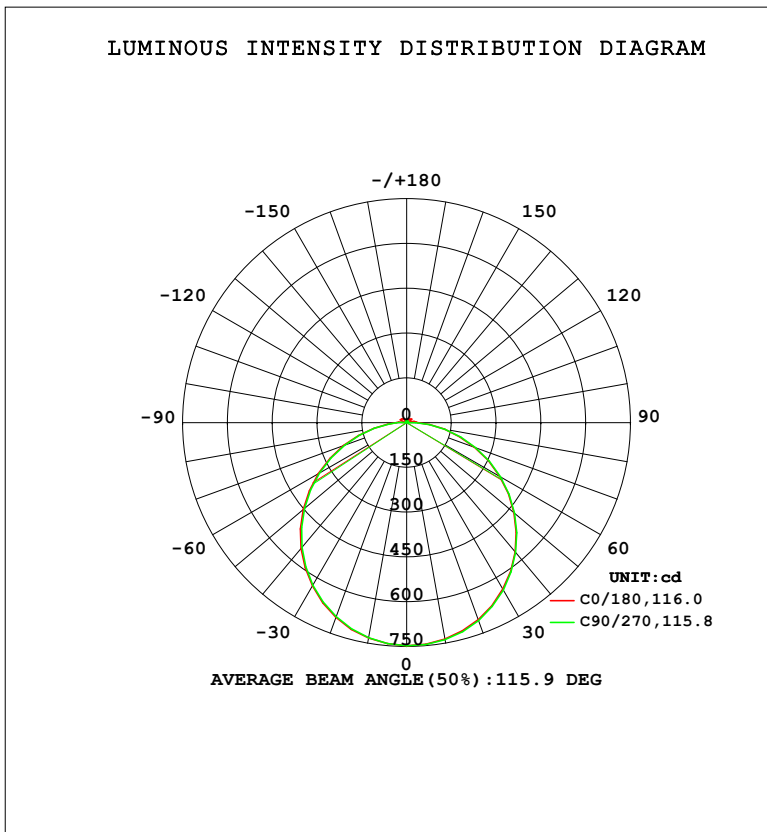


LUMINAIRE PHOTOMETRIC TEST REPORT

Test:U:220.35V I:0.0926A P:20.063W PF:0.9836 Freq:50.00Hz Lamp Flux:2367.2x1 lm		
NAME:	TYPE: 122	WEIGHT:
SPEC.:	DIM.:	SERIAL No.:
MFR.: EVERFINE	SUR.:	Shielding Angle:

DATA OF LAMP		PHOTOMETRIC DATA			
MODEL	122c/s	Imax (cd)	747.4	S/MH (C0/180)	1.26
NOMINAL POWER (W)	20	LOR (%)	100.0	S/MH (C90/270)	1.25
RATED VOLTAGE (V)	220	TOTAL FLUX (lm)	2367.2	η UP, DN (C0-180)	1.4, 49.6
NOMINAL FLUX (lm)	2367.2	CIE CLASS	DIRECT	η UP, DN (C180-360)	1.5, 47.5
LAMPS INSIDE	1	η up (%)	2.9	CIBSE SHR NOM	1.25
TEST VOLTAGE (V)	219.5	η down (%)	97.1	CIBSE SHR MAX	1.35



C Range: 0 - 360DEG
 C Interval: 22.5DEG
 Test Speed: HIGH
 Temperature: 25.3°C
 Operators: DAMIN
 Test Date: 2023-11-22

γ Range: 0 - 180DEG
 γ Interval: 5.0DEG
 Test System: EVERFINE GO-2000B_V1 SYSTEM V2.00.473
 Humidity: 65.0%
 Test Distance: 9.401m [K=1.0000]
 Remarks:

ZONAL FLUX DIAGRAM

ZONAL FLUX DIAGRAM:

γ	C0	C45	C90	C135	C180	C225	C270	C315	γ	Φ zone	Φ total	%lum, lamp
10	735.8	739.2	738.7	736.0	732.3	731.4	731.9	734.2	0- 10	70.75	70.75	2.99,2.99
20	701.8	706.9	705.0	700.8	693.4	692.0	691.9	697.6	10- 20	203.2	274.0	11.6,11.6
30	644.1	651.7	647.2	642.7	631.9	630.3	628.6	638.3	20- 30	309.7	583.7	24.7,24.7
40	565.8	575.4	568.4	564.4	550.1	548.5	545.5	559.2	30- 40	376.6	960.4	40.6,40.6
50	469.8	481.6	472.5	469.0	452.3	451.3	446.9	463.5	40- 50	396.3	1357	57.3,57.3
60	360.0	374.2	363.3	360.7	342.0	342.4	337.2	355.5	50- 60	367.0	1724	72.8,72.8
70	242.1	258.3	246.2	245.0	224.8	227.3	220.6	240.8	60- 70	294.3	2018	85.2,85.2
80	128.5	145.3	130.8	134.7	112.7	118.6	109.4	130.3	70- 80	192.4	2210	93.4,93.4
90	38.14	43.24	30.84	39.54	36.10	40.74	33.33	44.35	80- 90	87.59	2298	97.1,97.1
100	25.06	9.047	3.000	2.800	3.891	2.977	2.813	8.581	90-100	22.26	2320	98,98
110	4.923	7.068	2.819	12.66	12.46	11.70	4.818	8.098	100-110	7.206	2327	98.3,98.3
120	15.95	13.57	3.579	14.07	22.43	13.21	3.979	13.49	110-120	10.26	2338	98.8,98.8
130	19.65	12.15	4.466	11.01	20.12	10.28	4.849	12.23	120-130	10.78	2349	99.2,99.2
140	15.70	11.37	5.402	6.387	15.84	5.235	5.398	10.28	130-140	8.112	2357	99.6,99.6
150	12.03	7.747	7.455	7.165	6.292	7.770	6.588	6.725	140-150	4.967	2362	99.8,99.8
160	7.241	5.984	6.805	5.958	7.976	6.201	6.719	6.201	150-160	3.075	2365	99.9,99.9
170	6.933	6.610	6.502	6.545	6.965	6.579	6.593	6.722	160-170	1.846	2367	100,100
180	7.501	7.395	7.516	7.358	7.519	7.401	7.534	7.382	170-180	0.6617	2367	100,100
DEG	LUMINOUS INTENSITY:cd									UNIT:lm		

Conical surface Flux(90deg): 1159.2 lm

%lum = 49.0%

%lamp = 49.0%

Conical surface Flux(130deg): 1882.2 lm

%lum = 79.5%

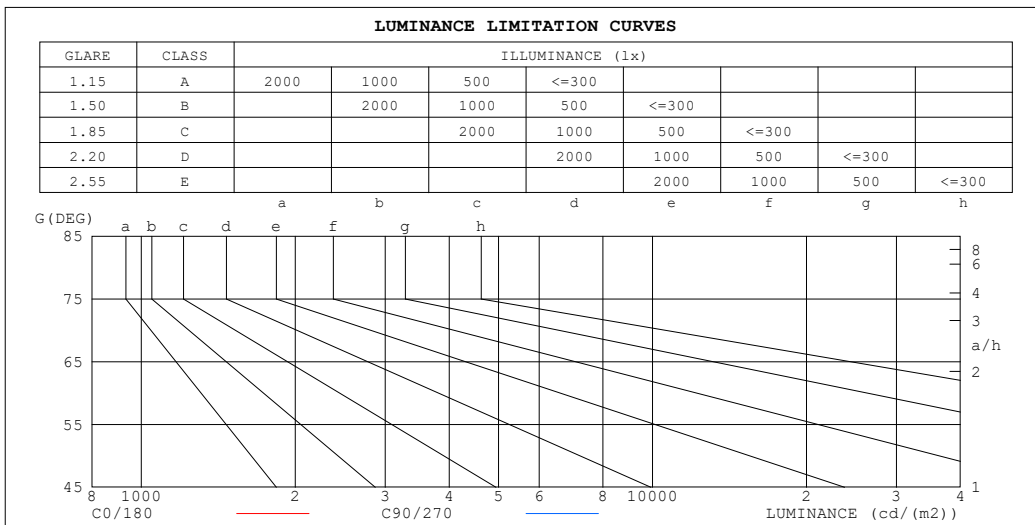
%lamp = 79.5%

C Range: 0 - 360DEG
 C Interval: 22.5DEG
 Test Speed: HIGH
 Temperature:25.3°C
 Operators:DAMIN
 Test Date:2023-11-22

γ Range: 0 - 180DEG
 γ Interval: 5.0DEG
 Test System:EVERFINE GO-2000B_V1 SYSTEM V2.00.473
 Humidity:65.0%
 Test Distance:9.401m [K=1.0000]
 Remarks:

LUMINANCE LIMITATION CURVES

Test:U:220.35V I:0.0926A P:20.063W PF:0.9836 Freq:50.00Hz Lamp Flux:2367.2x1 lm		
NAME:	TYPE: 122	WEIGHT:
SPEC.:	DIM.:	SERIAL No.:
MFR.: EVERFINE	SUR.:	Shielding Angle:



LUMINANCE cd/(m2)		
G (DEG)	C0/180	C90/270
85	909	886
80	748	751
75	715	723
70	715	718
65	721	721
60	728	725
55	733	730
50	739	733
45	742	737

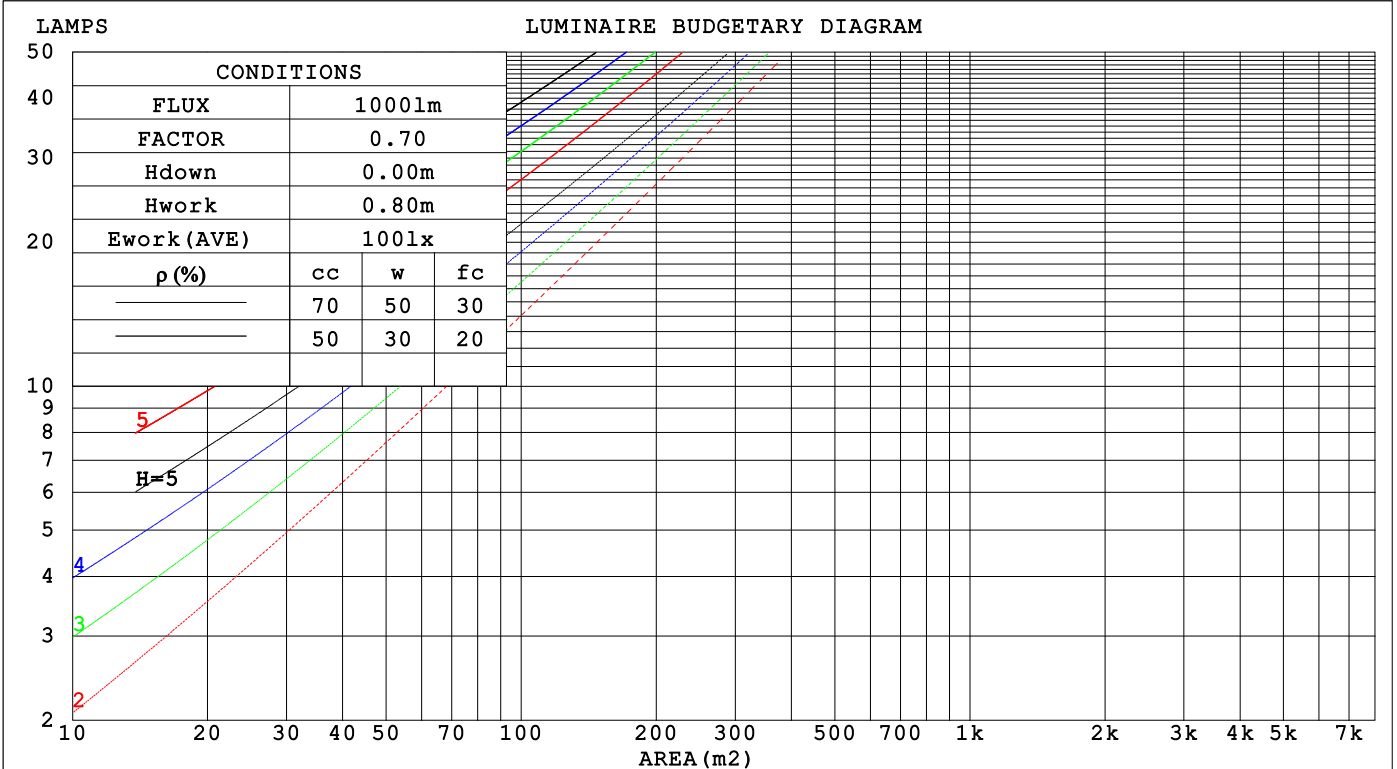
C Range: 0 - 360DEG
 C Interval: 22.5DEG
 Test Speed: HIGH
 Temperature:25.3°C
 Operators:DAMIN
 Test Date:2023-11-22

γ Range: 0 - 180DEG
 γ Interval: 5.0DEG
 Test System:EVERFINE GO-2000B_V1 SYSTEM V2.00.473
 Humidity:65.0%
 Test Distance:9.401m [K=1.0000]
 Remarks:

CU AND LUMINAIRE BUDGETARY ESTIMATE DIAGRAM

Test:U:220.35V I:0.0926A P:20.063W PF:0.9836 Freq:50.00Hz Lamp Flux:2367.2x1 lm		
NAME:	TYPE: 122	WEIGHT:
SPEC.:	DIM.:	SERIAL No.:
MFR.: EVERFINE	SUR.:	Shielding Angle:

ρ_{cc}	80%			70%			50%			30%			10%			0
ρ_w	50%	30%	10%	50%	30%	10%	50%	30%	10%	50%	30%	10%	50%	30%	10%	0
ρ_{fc}	20%			20%			20%			20%			20%			0
RCR	RCR:Room Cavity Ratio						Coefficients of Utilization(CU)									
0.0	1.18	1.18	1.18	1.15	1.15	1.15	1.09	1.09	1.09	1.04	1.04	1.04	.99	.99	.99	.97
1.0	1.02	.97	.93	.99	.95	.91	.94	.91	.88	.90	.87	.84	.86	.84	.81	.79
2.0	.88	.81	.75	.86	.79	.74	.82	.76	.71	.78	.73	.69	.75	.71	.67	.65
3.0	.77	.68	.62	.75	.67	.61	.72	.65	.59	.69	.63	.58	.66	.61	.57	.54
4.0	.68	.59	.52	.66	.58	.51	.64	.56	.50	.61	.54	.49	.58	.53	.48	.46
5.0	.61	.51	.45	.59	.51	.44	.57	.49	.43	.54	.48	.43	.52	.47	.42	.40
6.0	.54	.45	.39	.53	.45	.38	.51	.44	.38	.49	.42	.37	.47	.41	.37	.35
7.0	.49	.40	.34	.48	.40	.34	.47	.39	.33	.45	.38	.33	.43	.37	.32	.30
8.0	.45	.36	.30	.44	.36	.30	.43	.35	.30	.41	.34	.29	.40	.34	.29	.27
9.0	.41	.33	.27	.40	.32	.27	.39	.32	.27	.38	.31	.26	.37	.31	.26	.24
10.0	.38	.30	.25	.37	.30	.24	.36	.29	.24	.35	.29	.24	.34	.28	.24	.22



C Range: 0 - 360DEG
 C Interval: 22.5DEG
 Test Speed: HIGH
 Temperature:25.3°C
 Operators:DAMIN
 Test Date:2023-11-22

γ Range: 0 - 180DEG
 γ Interval: 5.0DEG
 Test System:EVERFINE GO-2000B_V1 SYSTEM V2.00.473
 Humidity:65.0%
 Test Distance:9.401m [K=1.0000]
 Remarks:

WEC AND CCEC

Test:U:220.35V I:0.0926A P:20.063W PF:0.9836 Freq:50.00Hz								
Lamp Flux:2367.2x1 lm								
NAME:			TYPE: 122			WEIGHT:		
SPEC.:			DIM.:			SERIAL No.:		
MFR.: EVERFINE			SUR.:			Shielding Angle:		

ρ_{CC}	80%			70%			50%			30%			10%			0
ρ_w	50%	30%	10%	50%	30%	10%	50%	30%	10%	50%	30%	10%	50%	30%	10%	0
ρ_{fc}	20%			20%			20%			20%			20%			0
RCR	RCR:Room Cavity Ratio						Wall Exitance Coefficients (WEC)									
0.0																
1.0	.336	.191	.061	.328	.187	.059	.313	.180	.057	.299	.173	.055	.286	.166	.054	
2.0	.307	.168	.052	.300	.165	.051	.287	.159	.050	.274	.154	.048	.263	.149	.047	
3.0	.280	.149	.045	.274	.147	.044	.262	.142	.043	.251	.138	.042	.241	.133	.041	
4.0	.257	.133	.039	.251	.131	.039	.240	.127	.038	.230	.124	.037	.221	.120	.037	
5.0	.236	.120	.035	.231	.118	.035	.221	.115	.034	.212	.112	.033	.204	.109	.033	
6.0	.218	.109	.031	.213	.108	.031	.205	.105	.031	.197	.102	.030	.189	.100	.030	
7.0	.202	.100	.028	.198	.099	.028	.190	.096	.028	.183	.094	.027	.177	.092	.027	
8.0	.188	.092	.026	.185	.091	.026	.178	.089	.025	.171	.087	.025	.165	.085	.025	
9.0	.176	.085	.024	.173	.084	.024	.167	.082	.023	.161	.081	.023	.155	.079	.023	
10.0	.165	.079	.022	.162	.078	.022	.157	.077	.022	.151	.075	.021	.146	.074	.021	

ρ_{CC}	80%			70%			50%			30%			10%			0
ρ_w	50%	30%	10%	50%	30%	10%	50%	30%	10%	50%	30%	10%	50%	30%	10%	0
ρ_{fc}	20%			20%			20%			20%			20%			0
RCR	RCR:Room Cavity Ratio						Ceiling Cavity Exitance Coefficients (CCEC)									
0.0	.213	.213	.213	.182	.182	.182	.124	.124	.124	.071	.071	.071	.023	.023	.023	
1.0	.205	.178	.155	.175	.153	.133	.120	.105	.092	.069	.061	.054	.022	.020	.017	
2.0	.197	.154	.119	.169	.133	.103	.116	.092	.072	.067	.054	.042	.021	.017	.014	
3.0	.189	.137	.096	.162	.118	.083	.111	.082	.058	.064	.048	.034	.021	.016	.011	
4.0	.182	.124	.080	.156	.107	.070	.107	.075	.049	.062	.044	.029	.020	.014	.010	
5.0	.174	.114	.069	.149	.098	.060	.103	.069	.043	.060	.040	.025	.019	.013	.008	
6.0	.167	.105	.062	.143	.091	.054	.099	.064	.038	.057	.038	.023	.018	.012	.007	
7.0	.160	.099	.056	.137	.085	.049	.095	.060	.034	.055	.035	.021	.018	.012	.007	
8.0	.153	.093	.051	.132	.081	.045	.091	.057	.032	.053	.033	.019	.017	.011	.006	
9.0	.147	.088	.048	.127	.076	.042	.088	.054	.030	.051	.032	.018	.017	.010	.006	
10.0	.141	.084	.045	.122	.073	.040	.084	.051	.028	.049	.030	.017	.016	.010	.006	

C Range: 0 - 360DEG
 C Interval: 22.5DEG
 Test Speed: HIGH
 Temperature:25.3°C
 Operators:DAMIN
 Test Date:2023-11-22

γ Range: 0 - 180DEG
 γ Interval: 5.0DEG
 Test System:EVERFINE GO-2000B_V1 SYSTEM V2.00.473
 Humidity:65.0%
 Test Distance:9.401m [K=1.0000]
 Remarks:

UGR(Unified Glare Rating) Table

Test:U:220.35V I:0.0926A P:20.063W PF:0.9836 Freq:50.00Hz										
Lamp Flux:2367.2x1 lm										
NAME:			TYPE: 122				WEIGHT:			
SPEC.:			DIM.:				SERIAL No.:			
MFR.: EVERFINE			SUR.:				Shielding Angle:			
ceiling/cavity	0.7	0.7	0.5	0.5	0.3	0.7	0.7	0.5	0.5	0.3
walls	0.5	0.3	0.5	0.3	0.3	0.5	0.3	0.5	0.3	0.3
working plane	0.2	0.2	0.2	0.2	0.2	0.2	0.2	0.2	0.2	0.2
Room dimensions	Viewed crosswise					Viewed endwise				
x = 2H y = 2H	8.8	10.3	9.1	10.6	10.9	8.8	10.3	9.1	10.6	10.8
3H	10.6	12.0	10.9	12.2	12.5	10.5	12.0	10.9	12.2	12.5
4H	11.3	12.6	11.7	13.0	13.3	11.3	12.7	11.7	13.0	13.3
6H	12.0	13.2	12.3	13.6	13.9	12.0	13.3	12.4	13.6	13.9
8H	12.2	13.5	12.6	13.8	14.1	12.3	13.5	12.7	13.8	14.2
12H	12.5	13.7	12.9	14.0	14.4	12.5	13.7	12.9	14.0	14.4
4H 2H	9.5	10.9	9.9	11.2	11.5	9.5	10.8	9.9	11.2	11.5
3H	11.5	12.6	11.9	13.0	13.4	11.5	12.6	11.9	13.0	13.4
4H	12.4	13.4	12.8	13.8	14.2	12.4	13.5	12.8	13.8	14.2
6H	13.2	14.2	13.6	14.6	15.0	13.2	14.2	13.7	14.6	15.0
8H	13.5	14.4	14.0	14.9	15.3	13.6	14.5	14.0	14.9	15.3
12H	13.9	14.7	14.3	15.1	15.6	13.9	14.7	14.4	15.2	15.6
8H 4H	12.8	13.7	13.2	14.1	14.5	12.8	13.7	13.2	14.1	14.6
6H	13.8	14.6	14.3	15.0	15.5	13.8	14.6	14.3	15.0	15.5
8H	14.3	15.0	14.8	15.5	16.0	14.3	15.0	14.8	15.5	16.0
12H	14.8	15.4	15.3	15.9	16.4	14.8	15.4	15.3	15.9	16.4
12H 4H	12.8	13.6	13.3	14.1	14.6	12.8	13.7	13.3	14.1	14.6
6H	13.9	14.6	14.4	15.1	15.6	14.0	14.6	14.5	15.1	15.6
8H	14.5	15.1	15.0	15.6	16.1	14.5	15.1	15.1	15.6	16.2
Variations with the observer position at spacings(CIE Pub.117):										
S = 1.0H	+ 0.1 / - 0.1					+ 0.1 / - 0.1				
1.5H	+ 0.2 / - 0.3					+ 0.2 / - 0.3				
2.0H	+ 0.2 / - 0.4					+ 0.1 / - 0.4				

CIE Pub.117, 2367 lm Total Lamp Luminous Flux Correct (8log(F/F0) = 3.0)
 Area: 1 m2

C Range: 0 - 360DEG
 C Interval: 22.5DEG
 Test Speed: HIGH
 Temperature:25.3°C
 Operators:DAMIN
 Test Date:2023-11-22

γ Range: 0 - 180DEG
 γ Interval: 5.0DEG
 Test System:EVERFINE GO-2000B_V1 SYSTEM V2.00.473
 Humidity:65.0%
 Test Distance:9.401m [K=1.0000]
 Remarks:

UTILIZATION FACTORS TABLE

Test:U:220.35V I:0.0926A P:20.063W PF:0.9836 Freq:50.00Hz Lamp Flux:2367.2x1 lm		
NAME:	TYPE: 122	WEIGHT:
SPEC.:	DIM.:	SERIAL No.:
MFR.: EVERFINE	SUR.:	Shielding Angle:

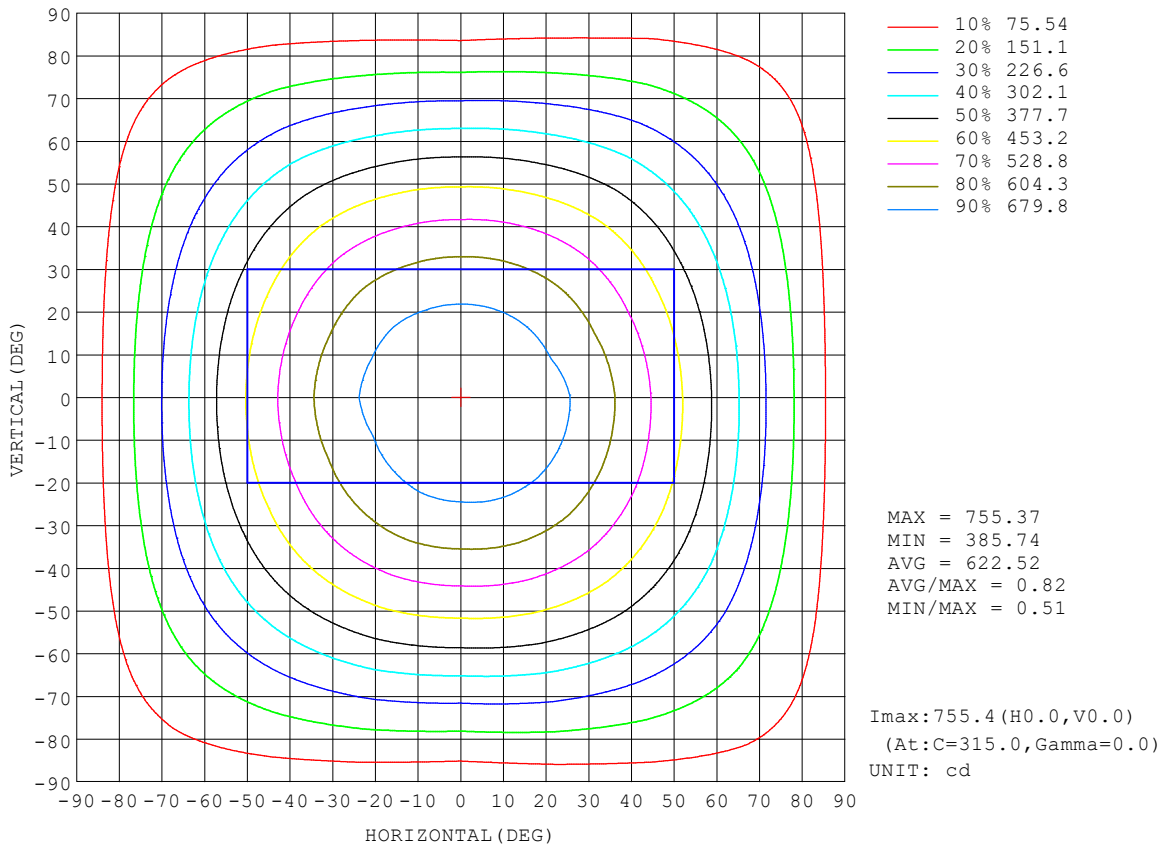
REFLECTANCE										
Ceiling	0.8	0.8	0.8	0.7	0.7	0.7	0.5	0.5	0.5	0
Walls	0.7	0.5	0.3	0.7	0.5	0.3	0.7	0.5	0.3	0
Working plane	0.2	0.2	0.2	0.2	0.2	0.2	0.2	0.2	0.2	0
ROOM INDEX	UTILIZATION FACTORS (PERCENT) $k(RI) \times RCR = 5$									
k = 0.60	55	43	36	54	43	36	53	42	36	29
0.80	65	53	45	64	52	45	62	52	45	37
1.00	73	62	54	72	61	54	69	62	53	45
1.25	80	69	62	79	68	61	76	67	60	52
1.50	85	75	67	83	74	67	80	72	66	57
2.00	92	83	76	90	82	75	86	79	74	65
2.50	96	88	81	94	86	80	90	83	78	69
3.00	100	92	86	97	91	85	93	87	83	73
4.00	104	98	93	101	96	91	97	92	88	78
5.00	107	101	97	104	99	95	99	95	92	81
ROOM INDEX	UF(total)									Direct
According to DIN EN 13032-2 2004			Suspended				SHRNOM = 1.25			

C Range: 0 - 360DEG
 C Interval: 22.5DEG
 Test Speed: HIGH
 Temperature:25.3°C
 Operators:DAMIN
 Test Date:2023-11-22

γ Range: 0 - 180DEG
 γ Interval: 5.0DEG
 Test System:EVERFINE GO-2000B_V1 SYSTEM V2.00.473
 Humidity:65.0%
 Test Distance:9.401m [K=1.0000]
 Remarks:

ISOCANDELA DIAGRAM

Test:U:220.35V I:0.0926A P:20.063W PF:0.9836 Freq:50.00Hz Lamp Flux:2367.2x1 lm		
NAME:	TYPE: 122	WEIGHT:
SPEC.:	DIM.:	SERIAL No.:
MFR.: EVERFINE	SUR.:	Shielding Angle:

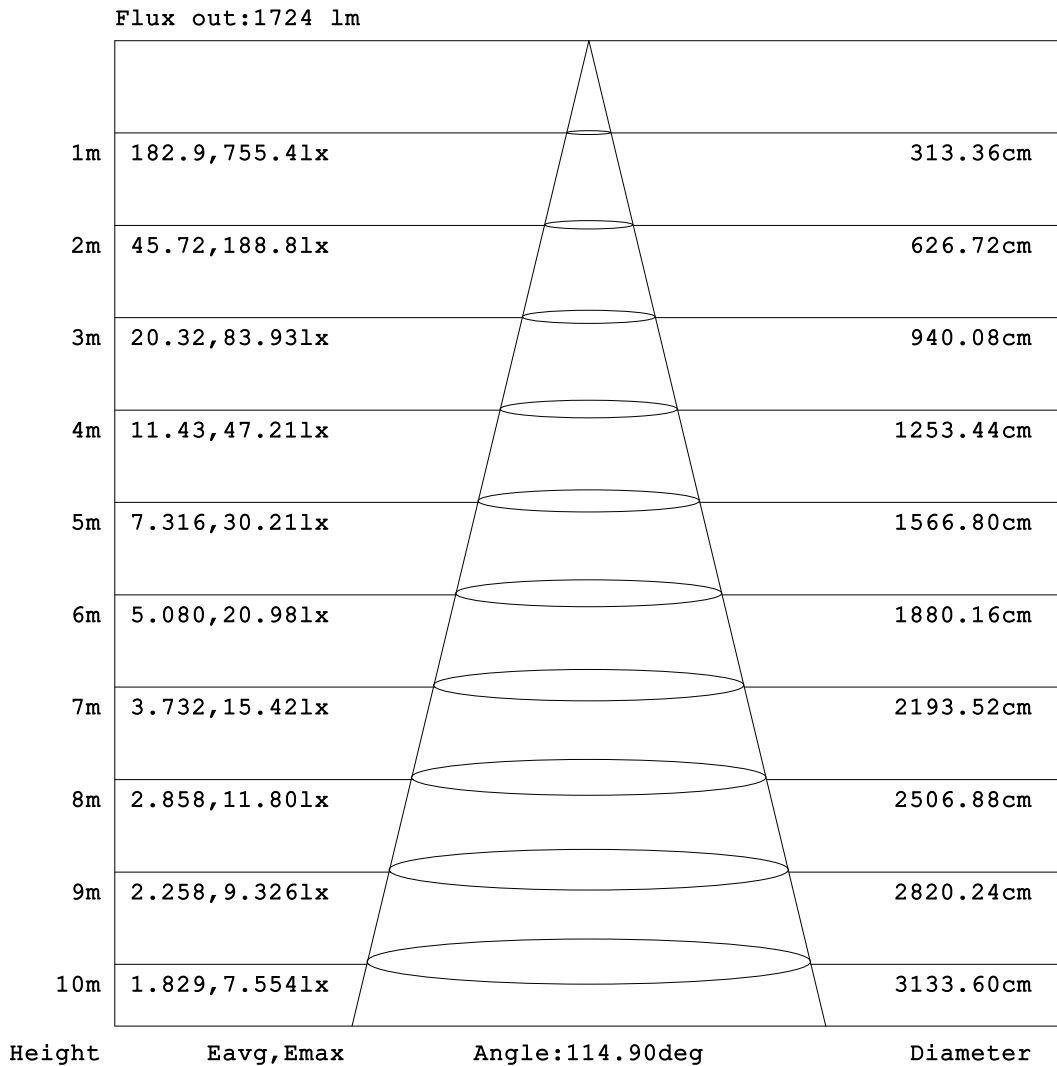


C Range: 0 - 360DEG
 C Interval: 22.5DEG
 Test Speed: HIGH
 Temperature:25.3°C
 Operators:DAMIN
 Test Date:2023-11-22

γ Range: 0 - 180DEG
 γ Interval: 5.0DEG
 Test System:EVERFINE GO-2000B_V1 SYSTEM V2.00.473
 Humidity:65.0%
 Test Distance:9.401m [K=1.0000]
 Remarks:

AAI Figure

Test:U:220.35V I:0.0926A P:20.063W PF:0.9836 Freq:50.00Hz Lamp Flux:2367.2x1 lm		
NAME:	TYPE: 122	WEIGHT:
SPEC.:	DIM.:	SERIAL No.:
MFR.: EVERFINE	SUR.:	Shielding Angle:



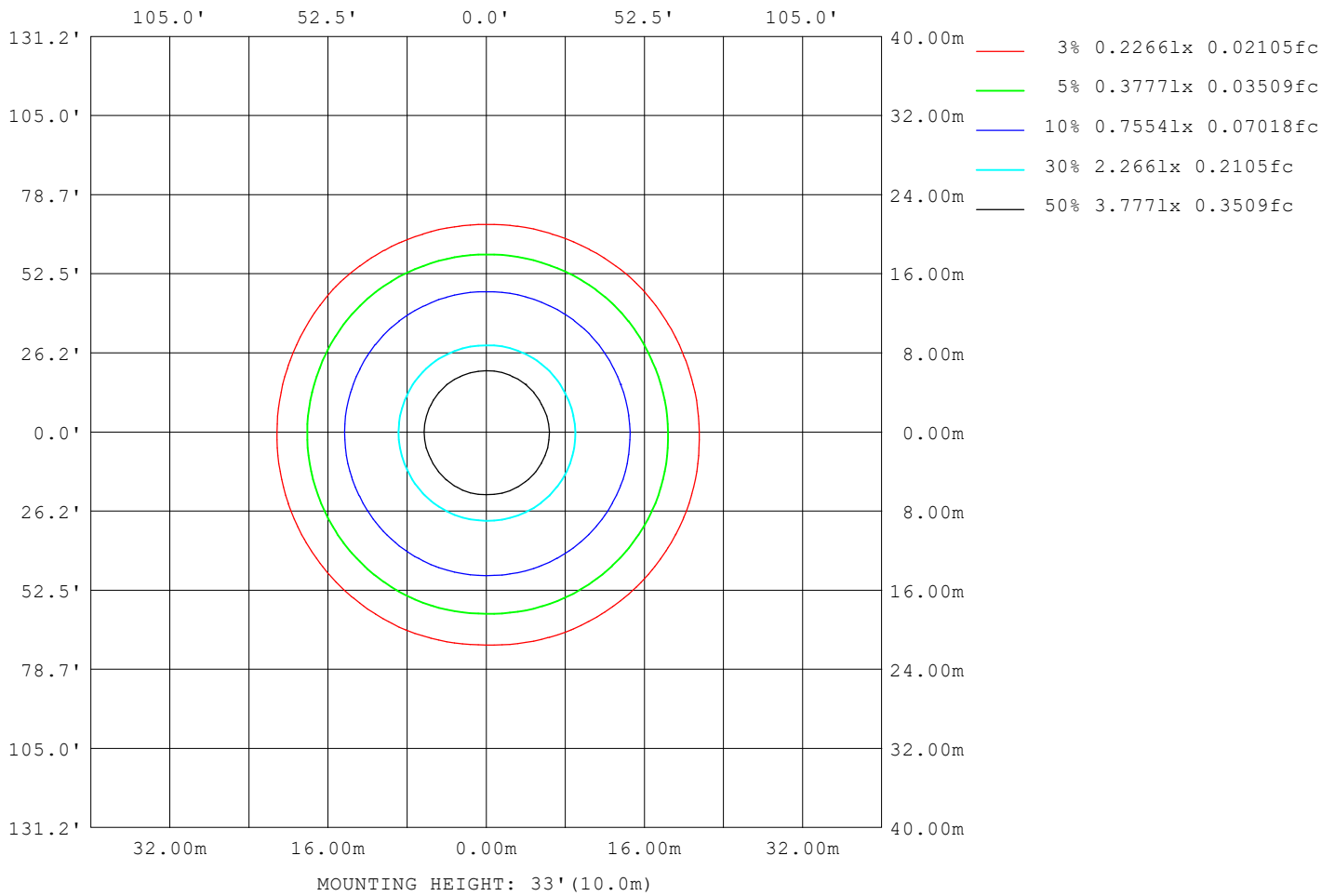
Note: The Curves indicate the illuminated area and the average illumination when the luminaire is at different distance.

C Range: 0 - 360DEG
C Interval: 22.5DEG
Test Speed: HIGH
Temperature: 25.3°C
Operators: DAMIN
Test Date: 2023-11-22

γ Range: 0 - 180DEG
γ Interval: 5.0DEG
Test System: EVERFINE GO-2000B_V1 SYSTEM V2.00.473
Humidity: 65.0%
Test Distance: 9.401m [K=1.0000]
Remarks:

ISOLUX DIAGRAM

Test:U:220.35V I:0.0926A P:20.063W PF:0.9836 Freq:50.00Hz Lamp Flux:2367.2x1 lm		
NAME:	TYPE: 122	WEIGHT:
SPEC.:	DIM.:	SERIAL No.:
MFR.: EVERFINE	SUR.:	Shielding Angle:



C Range: 0 - 360DEG
 C Interval: 22.5DEG
 Test Speed: HIGH
 Temperature:25.3°C
 Operators:DAMIN
 Test Date:2023-11-22

γ Range: 0 - 180DEG
 γ Interval: 5.0DEG
 Test System:EVERFINE GO-2000B_V1 SYSTEM V2.00.473
 Humidity:65.0%
 Test Distance:9.401m [K=1.0000]
 Remarks:

LED Avg.L Report

Test:U:220.35V I:0.0926A P:20.063W PF:0.9836 Freq:50.00Hz Lamp Flux:2367.2x1 lm		
NAME:	TYPE: 122	WEIGHT:
SPEC.:	DIM.:	SERIAL No.:
MFR.: EVERFINE	SUR.:	Shielding Angle:

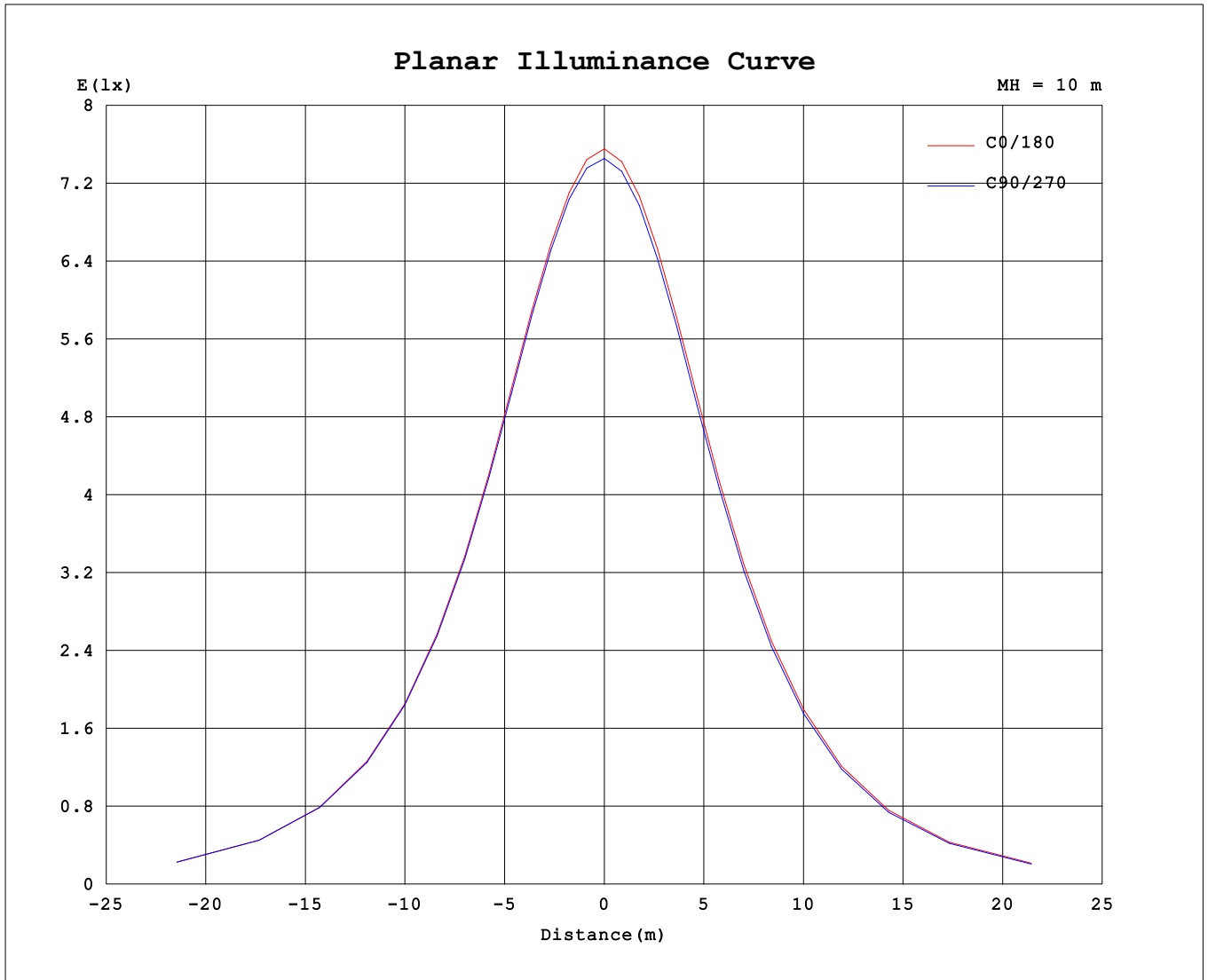
AvgL	cd/m2
L_0~180 (65) av	692
L_0~180 (75) av	676
L_0~180 (85) av	824
L_90~270 (65) av	691
L_90~270 (75) av	678
L_90~270 (85) av	798
L_45 (65) av	712
L_45 (75) av	718
L_45 (85) av	944

Standard: GB/T 29293-2012

C Range: 0 - 360DEG
 C Interval: 22.5DEG
 Test Speed: HIGH
 Temperature:25.3°C
 Operators:DAMIN
 Test Date:2023-11-22

γ Range: 0 - 180DEG
 γ Interval: 5.0DEG
 Test System:EVERFINE GO-2000B_V1 SYSTEM V2.00.473
 Humidity:65.0%
 Test Distance:9.401m [K=1.0000]
 Remarks:

Planar Illuminance Curve



C Range: 0 - 360DEG
 C Interval: 22.5DEG
 Test Speed: HIGH
 Temperature: 25.3°C
 Operators: DAMIN
 Test Date: 2023-11-22

γ Range: 0 - 180DEG
 γ Interval: 5.0DEG
 Test System: EVERFINE GO-2000B_V1 SYSTEM V2.00.473
 Humidity: 65.0%
 Test Distance: 9.401m [K=1.0000]
 Remarks:

LUMINOUS DISTRIBUTION INTENSITY DATA

Test:U:220.35V I:0.0926A P:20.063W PF:0.9836 Freq:50.00Hz Lamp Flux:2367.2x1 lm		
NAME:	TYPE: 122	WEIGHT:
SPEC.:	DIM.:	SERIAL No.:
MFR.: EVERFINE	SUR.:	Shielding Angle:

Table--1

UNIT: cd

C (DEG) \ γ (DEG)	0	22.5	45	67.5	90	112.5	135	157.5	180	202.5	225	247.5	270	292.5	315	337.5			
0	747	747	747	747	747	747	747	747	747	747	747	747	747	747	747	747			
5	745	746	746	746	746	746	744	744	743	743	742	742	743	743	743	745			
10	736	737	739	739	739	738	736	735	732	732	731	731	732	733	734	736			
15	722	726	726	726	725	724	721	720	717	715	714	714	715	716	719	721			
20	702	706	707	707	705	704	701	698	693	691	692	691	692	694	698	701			
25	677	681	682	682	679	678	674	671	666	663	664	662	663	666	671	674			
30	644	650	652	651	647	647	643	638	632	629	630	628	629	632	638	642			
35	607	612	616	615	610	610	606	601	593	590	592	589	589	594	601	605			
40	566	573	575	574	568	569	564	558	550	548	549	546	545	551	559	563			
45	519	528	530	529	522	523	519	512	503	501	502	499	498	505	513	517			
50	470	479	482	480	472	474	469	462	452	450	451	448	447	453	464	468			
55	416	426	430	427	420	421	416	409	399	397	398	394	393	400	411	413			
60	360	371	374	372	363	366	361	353	342	340	342	338	337	344	356	358			
65	302	314	317	316	305	309	303	296	283	282	285	280	279	287	299	301			
70	242	255	258	257	246	250	245	237	225	224	227	223	221	229	241	242			
75	183	196	200	199	188	193	188	180	167	168	171	167	163	172	184	184			
80	129	140	145	142	131	136	135	126	113	116	119	114	109	120	130	131			
85	78.4	90.0	92.5	88.0	77.4	83.5	83.6	78.0	65.3	69.5	71.4	66.7	61.8	71.8	81.5	82.0			
90	38.1	44.1	43.2	38.9	30.8	37.7	39.5	39.6	36.1	39.9	40.7	37.9	33.3	38.7	44.3	42.7			
95	33.0	27.7	15.6	6.72	7.65	6.27	6.65	19.8	27.3	18.9	10.6	15.5	17.7	15.1	22.3	30.6			
100	25.1	19.7	9.05	3.07	3.00	3.15	2.80	2.29	3.89	2.51	2.98	2.63	2.81	3.17	8.58	19.2			
105	14.3	10.6	3.16	5.36	2.86	5.22	6.66	2.63	2.95	3.23	8.48	7.46	4.63	8.37	3.41	9.89			
110	4.92	3.50	7.07	6.12	2.82	5.79	12.7	12.8	12.5	14.1	11.7	6.32	4.82	6.61	8.10	3.75			
115	7.78	9.32	13.0	5.64	3.21	5.73	13.5	20.3	24.2	19.5	12.3	5.28	3.54	6.09	13.5	10.3			
120	16.0	16.6	13.6	4.95	3.58	4.82	14.1	19.6	22.4	18.6	13.2	5.02	3.98	5.43	13.5	17.6			
125	21.1	18.9	12.9	4.34	4.03	4.47	13.0	19.3	21.0	18.1	12.1	4.73	4.38	4.98	13.0	19.0			
130	19.7	17.6	12.2	4.48	4.47	4.74	11.0	18.1	20.1	17.6	10.3	4.89	4.85	4.73	12.2	17.6			
135	17.6	15.9	11.2	5.36	4.93	5.54	7.15	15.9	18.1	15.8	4.86	5.44	5.20	5.46	10.6	15.9			
140	15.7	14.4	11.4	5.32	5.40	5.79	6.39	14.0	15.8	13.9	5.23	5.49	5.40	5.33	10.3	14.2			
145	13.7	12.8	6.78	6.52	6.52	6.49	6.72	5.20	5.76	5.48	5.77	5.42	5.83	5.44	5.56	12.6			
150	12.0	6.02	7.75	7.09	7.45	7.10	7.17	8.49	6.29	6.24	7.77	6.57	6.59	6.41	6.73	6.49			
155	6.24	5.95	5.79	6.94	7.57	6.94	5.81	5.87	6.16	6.02	6.18	6.72	6.94	6.69	6.12	6.18			
160	7.24	6.20	5.98	6.17	6.80	6.26	5.96	6.18	7.98	6.36	6.20	6.41	6.72	6.56	6.20	6.34			
165	6.33	6.41	6.61	6.41	6.24	6.35	6.44	6.26	6.52	6.36	6.54	6.50	6.39	6.53	6.72	6.51			
170	6.93	6.97	6.61	6.64	6.50	6.48	6.55	6.82	6.96	6.84	6.58	6.65	6.59	6.67	6.72	6.99			
175	6.84	6.92	6.97	6.99	6.89	7.00	6.94	7.10	7.13	7.12	6.91	6.86	6.91	6.97	6.96	7.00			
180	7.50	7.39	7.39	7.47	7.52	7.36	7.36	7.36	7.52	7.36	7.40	7.47	7.53	7.34	7.38	7.34			

C Range: 0 - 360DEG
 C Interval: 22.5DEG
 Test Speed: HIGH
 Temperature:25.3°C
 Operators:DAMIN
 Test Date:2023-11-22

γ Range: 0 - 180DEG
 γ Interval: 5.0DEG
 Test System:EVERFINE GO-2000B_V1 SYSTEM V2.00.473
 Humidity:65.0%
 Test Distance:9.401m [K=1.0000]
 Remarks: